

# MCM#6 – Pollution Prevention/Good Housekeeping for Municipal Operations

Licking County MS4  
12-14-2016

# Why are we here?

- Heath is an MS4 Community
  - MS4 = Municipal Separate Storm Sewer System
- SWMP – Storm Water Management Program
  - Six Minimum Control Measures:
    - MCM1 - Public Education & Outreach
    - MCM2 - Public Participation & Involvement
    - MCM3 - Illicit Discharge Detection & Elimination
    - MCM4 - Construction Site Runoff Control
    - MCM5 - Post-Construction Storm Water Management
    - **MCM6 – Pollution Prevention/Good Housekeeping for Municipal Operations**

# MCM#6 Requirements

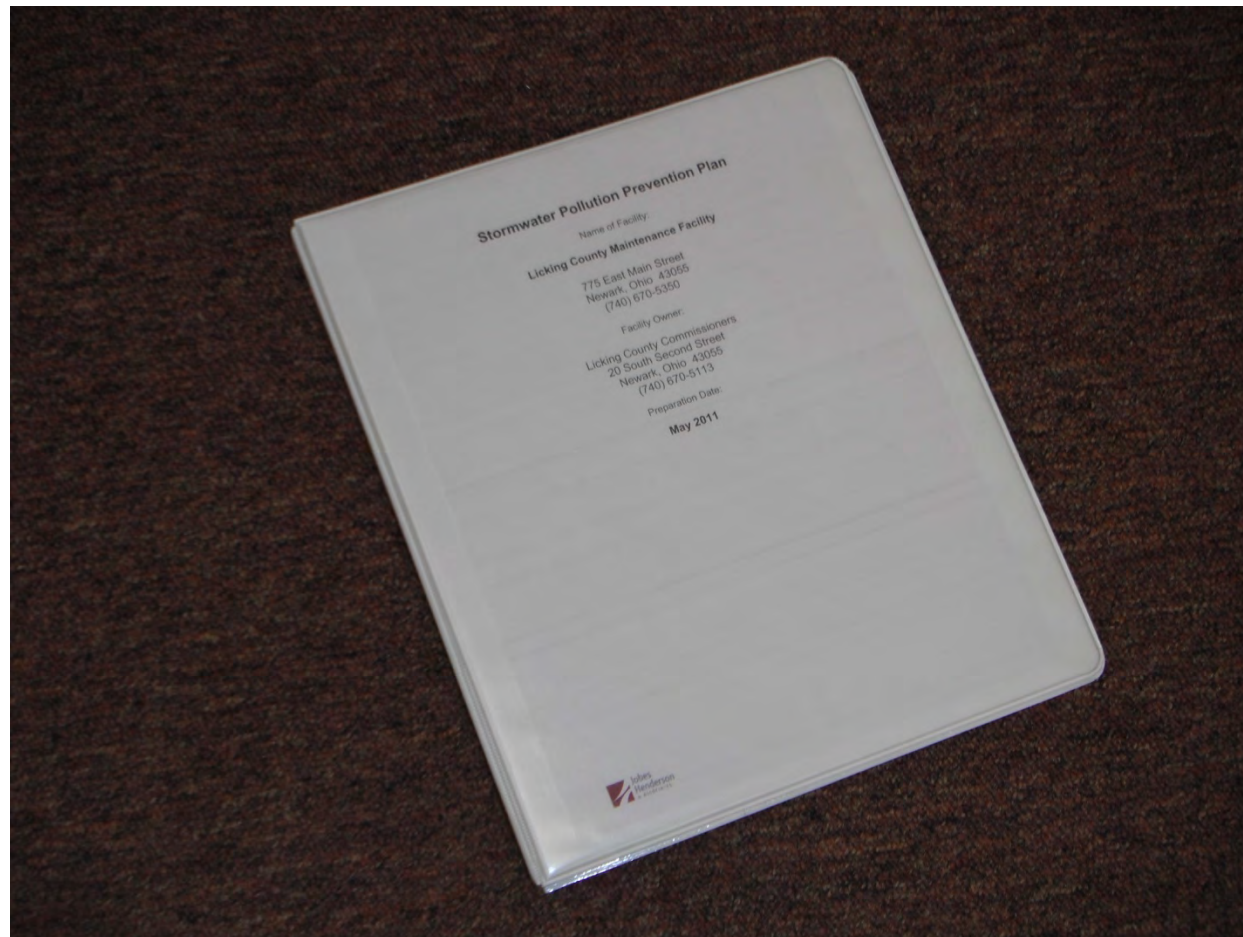
- Develop & implement an O&M program
  - Includes training
  - Goal of preventing or reducing pollutant runoff from municipal operations
- Include training to prevent or reduce pollution
  - Park & open space maintenance
  - Fleet & building maintenance
  - New construction & land disturbance
  - Storm water system maintenance
  - Municipal facility operations (= private requirements)

# Training Required by the Permit

- Annual Employee Training -- in order to eliminate or reduce storm water pollution.
- Best Management Practices (BMPs):
  - Good Housekeeping & Spill Prevention
  - Vehicle & Equipment Washing
  - Vehicle & Equipment Maintenance
  - Spill Reporting & Response
  - Street Maintenance (including Storm Sewers & Ditches)
  - Outdoor Storage of Materials & Wastes
  - Landscaping & Lawn Care
  - Illicit Discharge Detection

# Stormwater Pollution Prevention Plan (SWPPP)

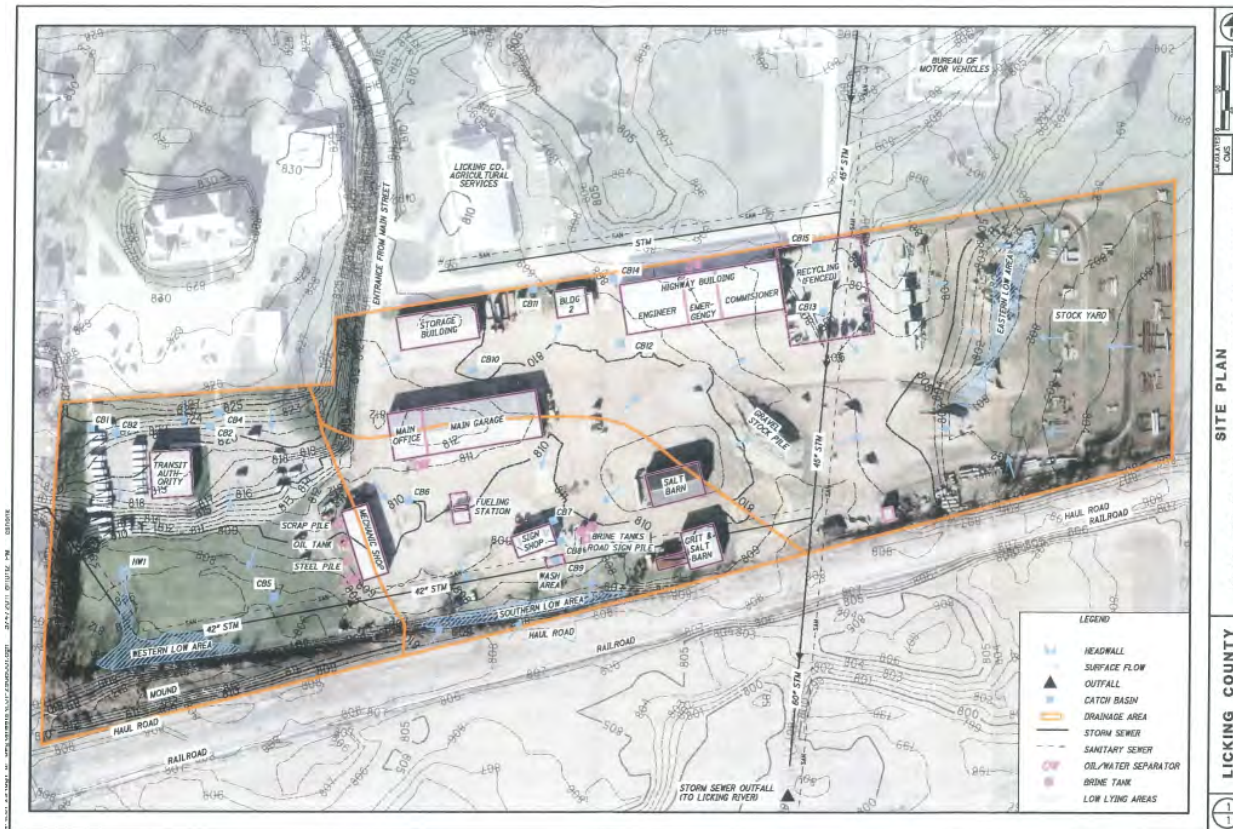
\*Required for facilities within MS4 Urbanized Areas\*



# SWPPP

## 3.0 Description of Municipal Facility Operations

### Location Map, Site Map:



# 4.4 Summary of Potential Pollutant Sources

## 4.3 Summary of Potential Pollutant Sources

Potential Pollutant	Storage Location	Storage Method	Quantity	Outfall
Brine	Brine Tank	2 single walled tanks protected from traffic	5,800 gallons and 6,100 gallons	Southern Low Area
Road Salt	Salt Barn	Stockpiled under roof in 3 walled structures.	2,000 tons	Eastern Low Area
Fuel	Fueling Station	Above ground, double walled, multi-chambered tank	4,000 gallons diesel, 1,000 gallons gasoline, 50 gallons kerosene	Storm & Southern Low Area
Misc. vehicle fluids	Shop & Garages	Inside building in closed containers	small amounts	Sanitary Sewer
Motor Oil	Main Garage	Overhead Drum inside building	55 gallons	Sanitary Sewer
Hydraulic Fluid	Main Garage	Drum inside building	55 gallons	Sanitary Sewer
Waterborne paint	Sign Shop	Closed container paint totes inside building	250 gallons	CB 9 to Storm Sewer
Hydraulic Fluid and Motor Oil	Mechanic Shop	Closed containers inside building	250 gallons / 250 gallons	Sanitary Sewer
Used Motor Oil	Mechanic Shop	Closed Tank next to building	250 gallons	Western Low Area
Scrap Box	Mechanic Shop	Uncovered Box next to building	3 cubic yards	Western Low Area
Trash Dumpster	Next to Main Office	Covered commercial dumpster with lids	3 cubic yards	CB6 to Storm Sewer
Recycle Staging	East of highway building	Empty compartmental trailers with lids – parked outside	20,000 square feet	Eastern Low area
Grease, grit, grime, oils and detergent	Wash Area	n/a	n/a	CB9 to Storm Sewer

## 4.0 Potential Pollutant Sources

- Chemicals/Materials
  - Brine Solution
  - Fuel
  - Oils
  - Paint
  - Road Salt
- Exposed Materials – stored new/used
- Waste Materials – used oils, trash



# 5.0 Stormwater Control Measures

- Employee Training
  - Annually
- Eliminate Illicit and Non-Stormwater Disch.
- Spill Prevention, Control, & Cleanup
  - Spill Incident Report (Appendix A)

# 6.0 Reporting/Record Keeping

- Annual Site Inspection
- Non-Storm Water Discharge Inspection
- Storm Water Discharge Visual Inspection
- Reporting Procedures
  - Inspection forms in Appendix A
  - Reports kept on file with this Plan

# Video: *Storm Watch*

(available from Ohio LTAP)

# BMPs shown in Video

- Vehicle and Equipment Washing
- Vehicle and Equipment Maintenance
- Good Housekeeping and Spill Prevention
- Spill Reporting and Response
- Street Maintenance
- Outdoor Storage of Materials and Waste
- Landscaping and Lawn Care
- Illicit Discharge Detection

# Discussion

- Materials handled that might cause pollution:
  - Lubricants
  - Paints
  - Salt
  - Brine
  - Fuels
  - Solvents
  - Aggregates

- Spill Kits?
  - Location
  - Contents
- Activities Most Likely to have a spill:
  - Fueling
  - Oil changes
  - Winter deicing (salt & brine)
- Dumpster kept closed?
- Vehicle washing
- General housekeeping?
  - Good enough?

# Vehicle & Equipment Washing

- Wash vehicles at a commercial facility
- Wash vehicles & equipment inside
  - Wash water must go to sanitary sewer
- When commercial or inside facilities are not available – wash on an impervious area where all runoff goes to the sanitary sewer.
  - Wash area should be roofed and clean water kept off of wash pad.

# Vehicle & Equipment Maintenance

- Stay with vehicle during fueling
- Move leaking equipment inside
- Use drip pans when equipment cannot be moved indoors immediately
- Perform vehicle maintenance inside



# Where did this come from?



Only takes a small amount of oil or fuel to make a big sheen!



# Good Housekeeping

- Keep work area neat and orderly
  - Don't let scrap accumulate
  - Sweep up regularly
  - Clean up drips & spills promptly
- Keep Unused containers tightly closed
  - Keep lids on containers unless using them
  - Make sure all containers are labeled correctly
- Use a drip pan temporarily till repairs made

# Spill Reporting & Response

- NEVER hose down a spill
  - That's strictly prohibited!
- Clean up spills quickly before they get away
  - Do a thorough job, leave no residue behind
- Protect storm drains from spills
  - Place pigs or absorbents between spill & drain
- Dispose of clean-up waste properly
  - Recycle or send to appropriate landfill facility

# Street Maintenance

- Debris from street sweeping and catch basin cleaning must go to a sanitary landfill.
- Waste water leaching from this material must go to the sanitary sewer system.
- Protect storm drain inlets during street maintenance.

# Dumpsters & Recycling



# Salt storage



# Landscaping & Lawn Care

- Obtain proper training and licensing prior to pesticide use.
- Use pesticides according to label.
- Use pesticides & fertilizers only as needed.
- Leave a buffer next to open water (ponds & streams) as labeled.
- Compost or otherwise properly dispose of clippings & yard waste.

# Illicit Discharge Detection

- Be alert to illicit discharges to the storm system
  - Discolored or inappropriate pipe discharges
  - Bad-smelling discharges
  - Potential for soil erosion to the storm system
- Report illicit discharges so they may be remedied



## More

- Outdoor Equipment Operations
  - Capture leaks
- Outdoor Materials Storage
  - Liquid Tanks (secondary containment??)
  - Materials that will not wash away
- Waste Handling & Disposal
  - Trash in dumpster (closed!)
  - Recycle oils, antifreeze, solvents, batteries

Questions ?