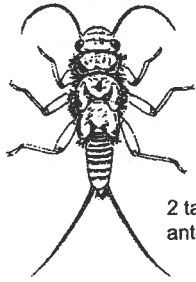


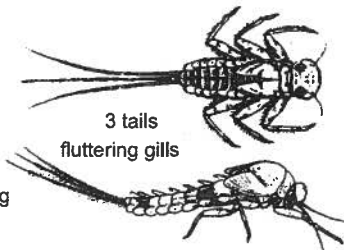
# Macroinvertebrate Identification Key

## GROUP 1 – Very Intolerant of Pollution



2 tails long antennae

Stonefly Nymph



3 tails fluttering gills

Mayfly Nymph



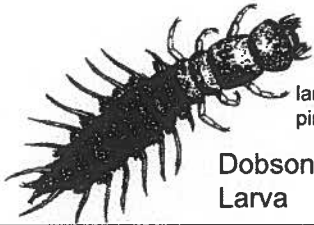
very small & hard shell

Riffle Beetle Adult & Larva



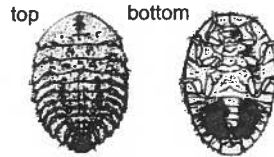
makes a case from twigs, rocks, leaves

Caddisfly Larva

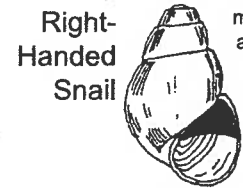


large head & 2 pinchers

Dobsonfly Larva

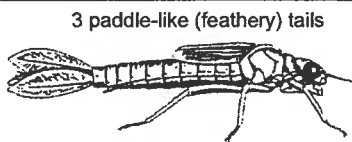


Water Penny Larva



Right-Handed Snail must be alive to count

## GROUP 2 – Moderately Intolerant of Pollution



3 paddle-like (feathery) tails

Damselfly Nymph



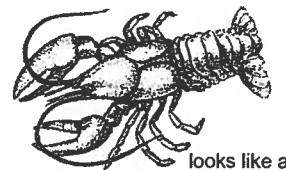
Dragonfly Nymph

no tails large eyes



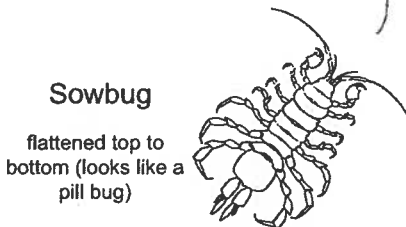
flattened side-ways & swims on side

Scud

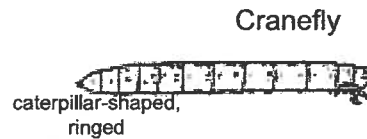


Crayfish

looks like a mini-lobster



Sowbug flattened top to bottom (looks like a pill bug)



Cranefly

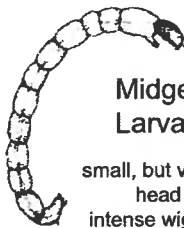
caterpillar-shaped, ringed



Clam/Mussel

must be alive to count

## GROUP 3 – Fairly Tolerant of Pollution



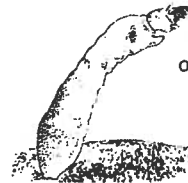
Midge Larva

small, but visible head intense wiggler



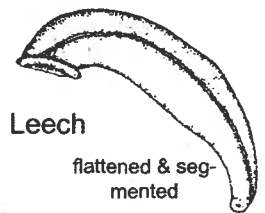
Planaria

2 eye spots & very small



Black Fly Larva

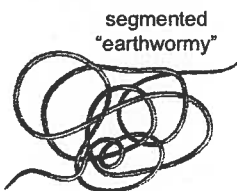
one end is swollen



Leech

flattened & segmented

## GROUP 4 – Very Tolerant of Pollution

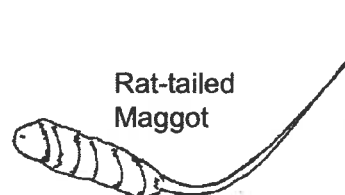


Aquatic Worms

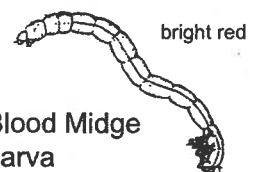
must be alive to count



Left-Handed Snail



Rat-tailed Maggot



Blood Midge Larva

bright red