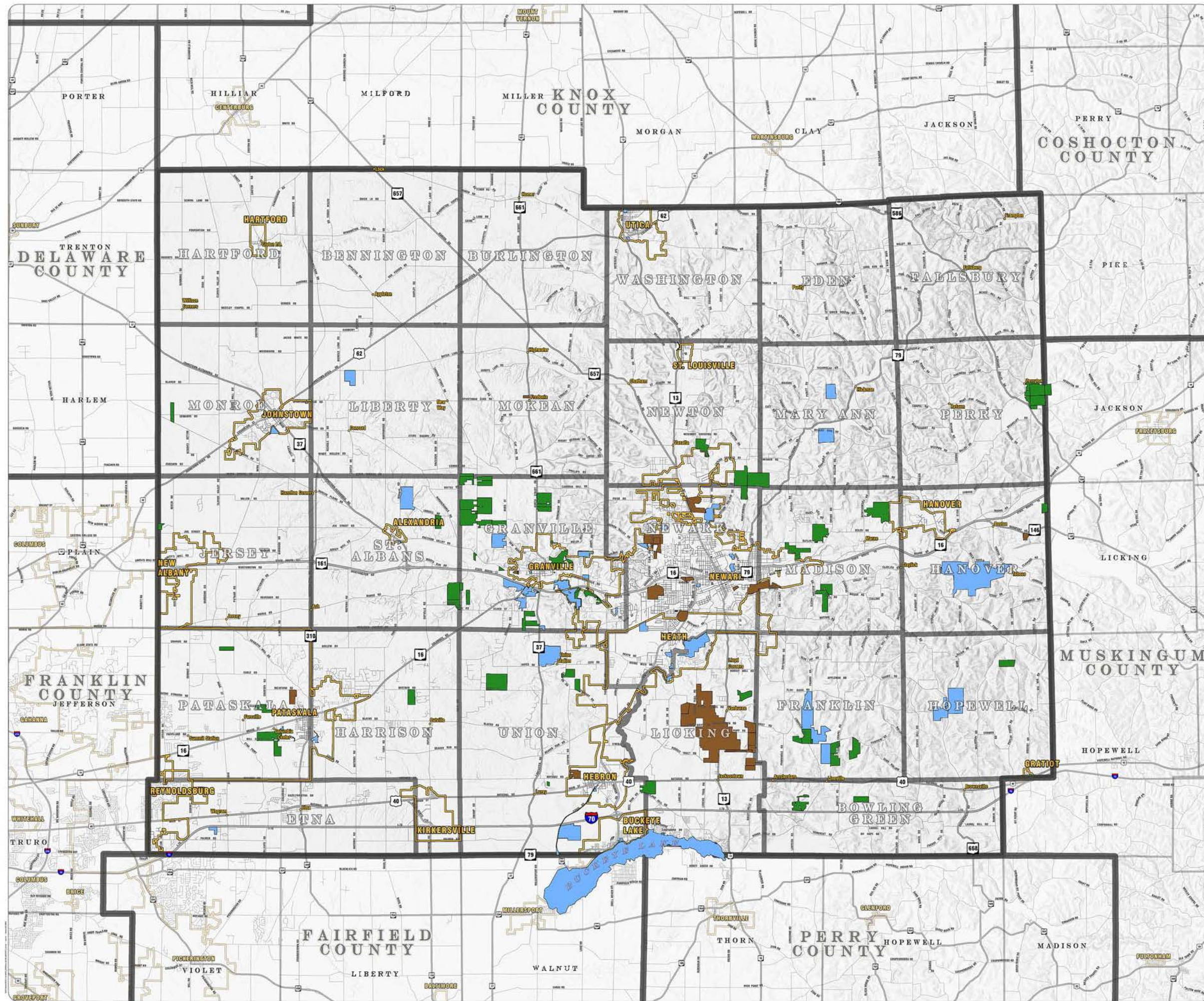


**PRESERVED LAND AND
OPEN SPACE MAP
SEPTEMBER 2016**

Licking County, Ohio.



- Formerly Platted Land
- Public Parks & Open Space
- Partially Platted Open Space
- Marked Corporate
- Proposed Plans
- Interstate/State Route
- County/Township/Municipal Road



MICHAEL L. SMITH
LICKING COUNTY AUDITOR
GIS DEPARTMENT

Kyle R. Schaper, GISP
GIS Director



This map was prepared using data provided by the Licking County Auditor's Office. The map is for informational purposes only and does not constitute a warranty of accuracy. The map is subject to change without notice.